



Putzmeister



Truck-mounted concrete pumps Performance Line

Everything you need for your everyday construction site work

Performance Line – Top quality and cost-effectiveness

Advantages at a glance

- **Familiar Putzmeister quality**
Known performance and quality – Like every Putzmeister machine, the Performance Line models are characterised by **high availability, low operating costs and high part quality.**
- **Standardized configuration**
The equipment of the Performance Line is firmly defined – The configuration includes **all that a concrete pump needs to cope with everyday site work** – special functions and comfort options, for which Putzmeister is known, have deliberately been omitted.
- **Short delivery times and attractive prices**
The models are produced with standardized processes in stock. This limits the variety of options and customer-specific adaptations. For our customers this means – **immediately available, at attractive prices!**



Endhose squeeze valve (optional)



Rear underrun protection (optional)

Putzmeister promise

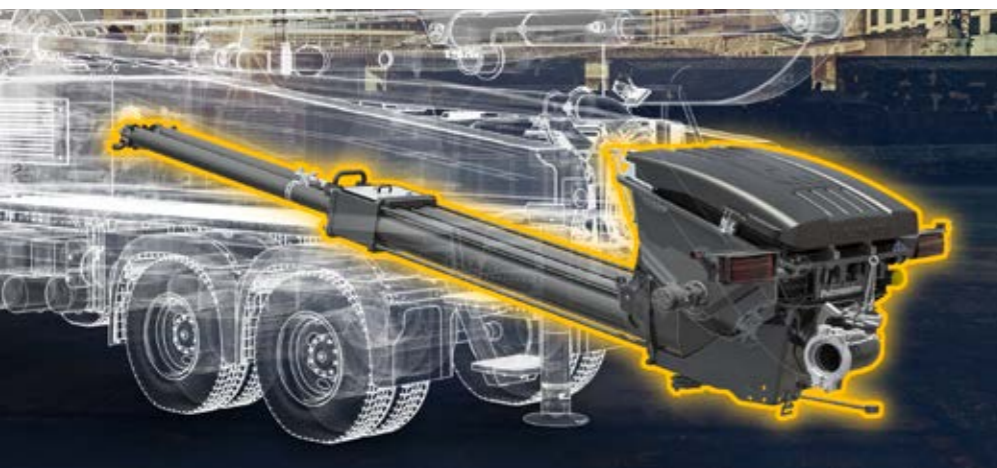
The name Putzmeister stands for machines that enable you to work with extreme productivity and go beyond purely being competitive. To this end, we provide extraordinarily innovative technologies alongside top quality and excellent service.

We are fully dedicated to supporting you both around the world and around the clock. And this is because every Putzmeister employee recognizes that your machine has important jobs to do.

Your Putzmeister Team

Pump, actuator, control system – trimmed for performance

Ergonic® 3 – precise, intuitive and reliable



Optimum set-up thanks to EPS (Ergonic® Pump System)

EPS provides fully electronic regulation of the operation of the concrete pump, the motor and the placing boom. For you, that means:

- High machine availability thanks to high-quality components with low wear
- Optimized, smooth pumping process
- Reduced movement of the machine and boom
- With (Ergonic® Output Control), ideal motor speed for lowest consumption, wear and noise
- New EPS Plus (optional) offers three predefined hose pump programmes
- In addition, the agitator function can be automated (optional), depending on the pump control
- Fault management via EGD-RC (Ergonic® Graphic Display-Remote Control)

Dedication in every respect

Ergonic® inside means that the machines are quickly ready for use and they work with high power, fuel efficiency and low wear. And most importantly for machine operators: **Work becomes easy!**



ergonic[®]
inside 3

The pump at a glance

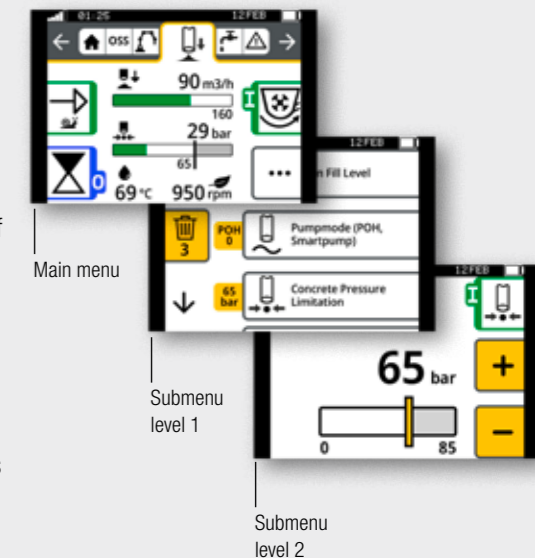
- **Pump geometry is optimally** adapted to all common types of concrete
- **Service-friendly control system** with free flow hydraulics and thus consistently high hydraulic fluid quality
- **Particularly wear-resistant** S transfer tube design, which guarantees long service life
- **Optimized hopper** (screwed-in grille, improved shape and optimized S transfer tube storage)
- **Agitator safety shutdown** via RFID (Radio Frequency Identification), a detection system using electromagnetic waves, including start-up protection
- **Smooth, optimized pumping** with EPS and EOC protects the pump and the truck
- **Optimized switchover** with SN control and Push Over avoids wear-intensive pressure peaks
- **Convenient and simple operation with Ergonic® 3**, the latest concept for control hardware and software from Putzmeister
- **Minimum operating costs** thanks to maintenance-free components, good accessibility and significantly reduced volumes of fluid
- **Easy replacement of components** due to screw concept, e.g. support cylinder
- **Optional agitator automatic system**, whereby the direction of rotation corresponds to the pump direction
- **Chrome-plated delivery cylinder** particularly wear-resistant

The new Ergonic® 3 – clear, fast and safe

- Continuous operating concept for all Putzmeister products with the same functions and displays – whether on the radio remote control or the Ergonic Graphic Display (EGD).
- Intuitive work and quick reactions thanks to a clear menu structure and intuitively arranged functions.
- Full overview of machine status on the radio remote control and EGD (incl. valves, sensors, LEDs on fuses).
- Detailed fault management: Faults are easy to detect and rectify – even without a Putzmeister technician.
- Multi-level emergency operation keeps the machine running even in the toughest conditions and in virtually every case.

Keeping an overview – in every situation

- The “static” menu bar guides users through the menu – with no chance of “getting lost”.
- Neatly and intuitively arranged functions.
- Simple menu structure with a maximum of two submenu levels.
- Main menu with all standard functions and additional details in submenus.



Consistent concept on all “switching centres”

- The menu structure is nearly identical on the remote control and the graphic display.
- Hardware and software are perfectly matched at all operating positions.
- The same intuitive operation on all Putzmeister products – without requiring a lot of training.



The additional screen on the control cabinet uses the same concept and offers a variety of information, settings and options.

Pumps

Type	Output m³/h	Pressure bar	Strokes/min	Stroke mm	Cylinder Ø mm
16 H	160 / 108*	85 / 130*	31 / 21*	2 100	230
11 H**	110	78	32	1 400	230

All data represent theoretical maximum values.
* Rod/piston side. Max. output and max. delivery pressures cannot be operated at the same time.
** 11 H only available for M27



iSC light – intelligent Setup Control



Safe support at a glance

Clearly structured figures in real time, intuitive operation and a radio remote control make setting up on the construction site quick and easy.

Our most supportive system ever – iSC light (intelligent Setup Control)

With the iSC light (intelligent Setup Control), Putzmeister is raising the stability of concrete pumps to a whole new level. The successor to the proven ESC system offers a significant improvement in terms of machine reach and flexibility. Incorporating relevant variables directly on the construction site results in a perfect combination of maximum stability and maximum reach. In this way, iSC light can perfectly support machine operators onsite in any situation.

On the safe side with iSC light

- **Optimized versatility**
Optimum support options to suit the space available on-site. Even in the most difficult of conditions.
- **Optimized reach**
Perfect interaction – the reliable reach prediction allows machine operators to utilise the robust steel structure of Putzmeister machines to their fullest potential.
- **Maximum safety**
100 % safety, no small print. Guaranteed stability in any situation. The patented drop warning and the possibility of providing additional support help machine operators in difficult conditions.
- **Flexible in use, economical in terms of costs**
Only the first two arm segments are fitted with sensors. Fewer installed parts mean less risk of replacement.



Increased limits thanks to FLEX base structure*

The support provided for Putzmeister concrete pumps has become more and more flexible over the past years. For the swinging support legs, it is already fully flexible and offers a variety of intermediate positions for the forward support legs. The combination of iSC and the substantially optimised steel

geometry now enables a level of flexibility not seen before. With the **new Putzmeister FLEX base structures**, supporting and setting up the machines is no easier and more flexible than ever before – and therefore incredibly straightforward for machine operators.

* only for M27 Performance Line



Performance Line

Technical data



Placing boom

M27

M36

M38

M42

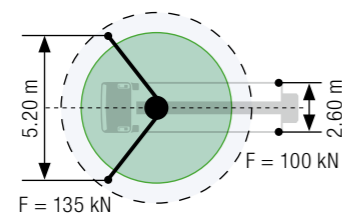
M47

M56

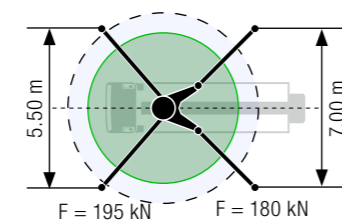
Folding type	4-arm Z fold system	4-arm Z fold system	5-arm RZ fold system	5-arm RZ fold system	5-arm RZ fold system	5-arm RZ fold system
Vertical reach	26.4 m	35.6 m	37.5 m	41.6 m	46.1 m	55.1 m
Horizontal reach	22.1 m gross	31.4 m gross	32.8 m gross	37.3 m gross	41.1 m gross	49.9 m gross
Depth of reach	16.6 m	23.1 m	25.3 m	31.0 m	32.4 m	34.9 m
Unfolding height	6.7 m	8.5 m	7.4 m	8.6 m	11.1 m	15.6 m
Length end hose	4 m	4 m	4 m	4 m	3 m	3 m
Delivery lines	DN 125, max. 85 bar	DN 125, max. 85 bar	DN 125, max. 85 bar	DN 125, max. 85 bar	DN 125, max. 85 bar	DN 125, max. 85 bar
Slewing range	365°	365°	365°	365°	365°	365°

Support

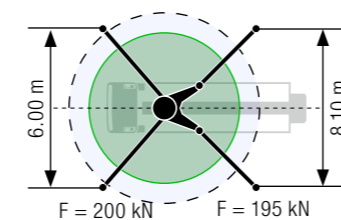
Standard – Full support



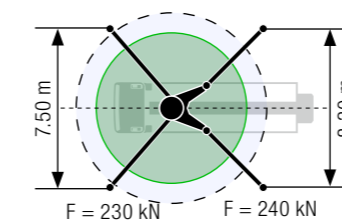
Standard – Full support



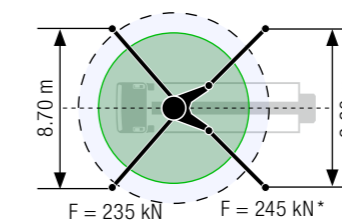
Standard – Full support



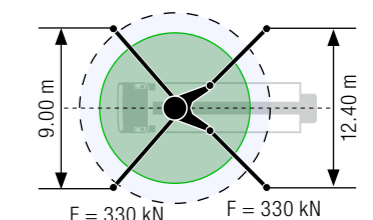
Standard – Full support



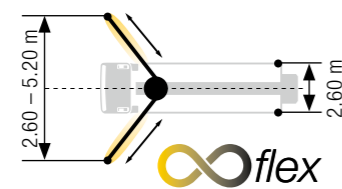
Standard – Full support



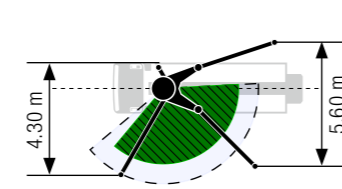
Standard – Full support



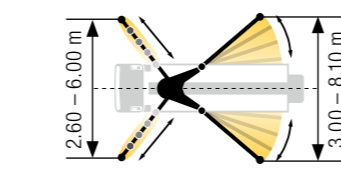
iSC-light** – Flexible support



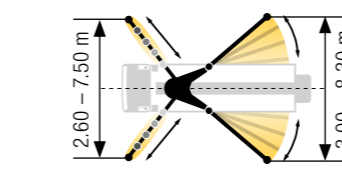
iSC-light**



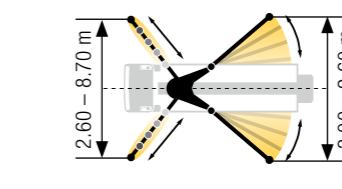
iSC-light** – Flexible support



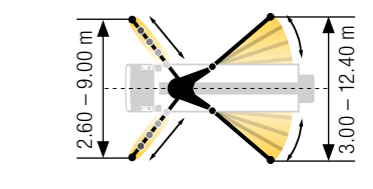
iSC-light** – Flexible support



iSC-light** – Flexible support



iSC-light** – Flexible support



* $F = 255 \text{ kN}$ for 5-axle chassis (m47)
 The specified values are reference forces.
 Dimensions can differ depending on configuration.
 Support width based on center of support leg.
 ** EEA, CE marking

Build on Putzmeister – in service, parts, training

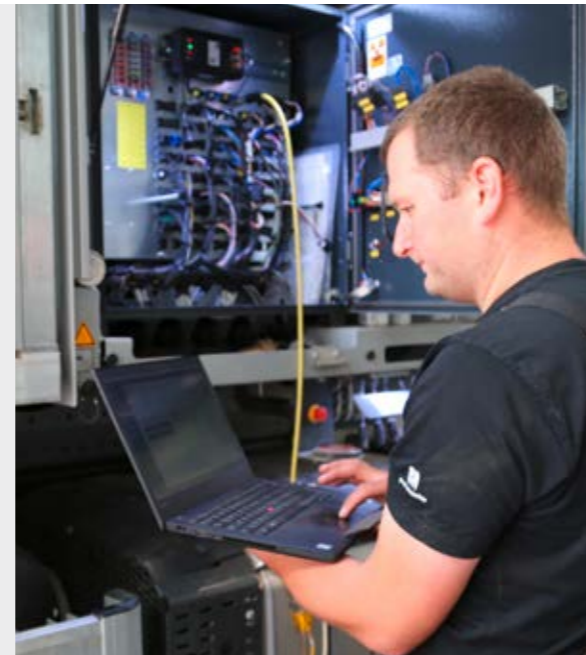
Everything that sets service apart

Swift assistance, meaningful advice and a reliable supply of genuine Putzmeister accessories and parts – in over 120 countries worldwide. This is what we at Putzmeister understand as first-class service.

Ideally placed to support you

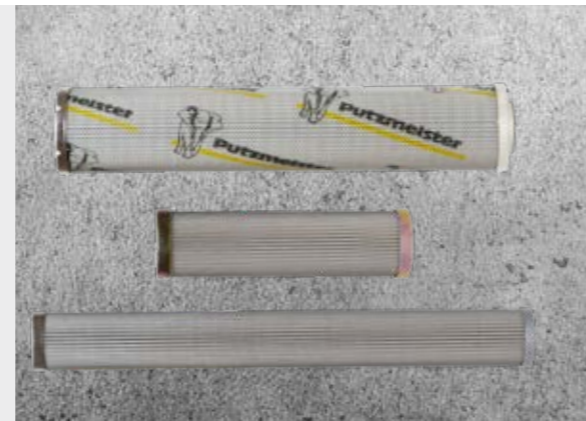
We provide continuous training for our service technicians, provide a close-knit information network and the latest equipment and consistently strive to meet our customers' needs.

Thanks to state-of-the-art technology, our employees have all the relevant technical information about your machine at their fingertips, should the need arise. Allowing us to provide you with the best possible support for emergencies, repairs or preventive maintenance.



Genuine parts for maximum availability

It goes without saying that we use only genuine Putzmeister parts in our workshops. This is the only way to guarantee consistent quality, checked for interoperability. And you can be absolutely sure that your machine meets the tough requirements with maximum performance and availability.



Excellent in quality customer proximity

In case of need, you have two options: Either the service team visits you or you take your machine to one of our service workshops. The latest tools, software analysis solutions and genuine parts ensure that your machine is operable again immediately.

All Putzmeister workshops and the workshops of our international Putzmeister partners meet our high quality standard. Especially when it comes to manufacturer's inspections and acceptance procedures in accordance with specifications.



Induction at handover – everything correct from the outset

So you and your machinist can adapt perfectly to all special features and innovations.

Customer training – benefit from expert knowledge

Practice-based learning offers a host of benefits: Your employees master the machine with all its special features, use the machine to optimum effect, reduce operating costs and avoid operating errors.

100 hours of customer service – avoid potential sources of error

Our customer service team provides you with a status report on your concrete pump as per the Putzmeister service plan.

Our services for cost-effective activities

The Putzmeister service support points offer you these services – all provided by our experienced service employees:

Mandatory machine inspection – calculable costs instead of incalculable failures

Visual inspection and functional check of components for 100 % safety. The hydraulic system with cylinders, electrical system and core pump are also inspected.

500 hours of customer service – protect your investment, retain your value

Our technical customer service team is the number one choice for checking the safety and wear of your machine. You receive a status report for this too.

Our range of training courses and seminars

For concrete pump machinists

- Training and development seminars Concrete pumps
- Training and development seminars PUMI with piston and rotor pumps
- Regional / company seminars (in your region or on your premises)

For concrete pumps mechanics

- Training and development seminars Concrete pumps

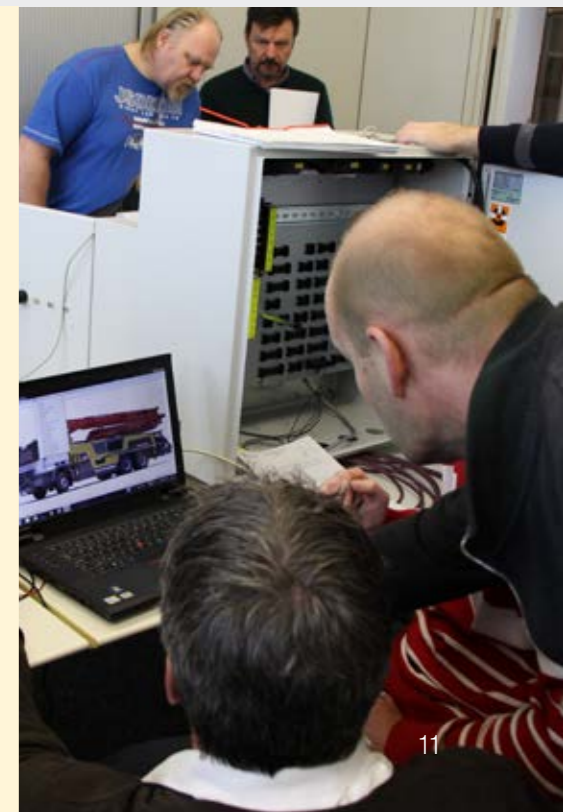
For concrete pump machinists and mechanics

- Practical days in Aichtal
- Training: Handover and induction, on-the-job training

For workshop managers and foremen

- Overview of current developments in Putzmeister concrete pumps
- Qualification at the customer workshops for requisite maintenance work

Further information can be found at: www.pm-akademie.de



Performance Line at a glance

- Like every Putzmeister machine, the Performance Line models are characterised by **high availability, low operating costs and high part quality.**
- **Standard equipment suitable for construction sites**
- **Short delivery times and attractive prices**
- **Efficient working** thanks to consistent sophisticated ergonomics and Ergonic® 3, the innovative control hardware and software
- **Maximum safety** thanks to comprehensive consideration of applicable standards and directives
- **Service-friendly** thanks to optimized accessibility and consistent screw concept
- **Minimal service costs** thanks to maintenance-free components, standardised wear parts and smaller quantities of functional fluids
- **Flexible, space-saving TRDI support system**, in particular, significantly reduced extent of supports when using OSS and iSC light



Note: The diagrams in the brochure do not necessarily correspond to the full scope of standard equipment for the machines.
Further brochures: Ergonic® 3 CT 5013



Putzmeister Concrete Pumps GmbH

Max-Eyth-Straße 10 · 72631 Aichtal / Germany
P.O.Box 2152 · 72629 Aichtal / Germany
Tel. +49 (7127) 599-0 · Fax +49 (7127) 599-520
pmw@putzmeister.com · www.putzmeister.com

