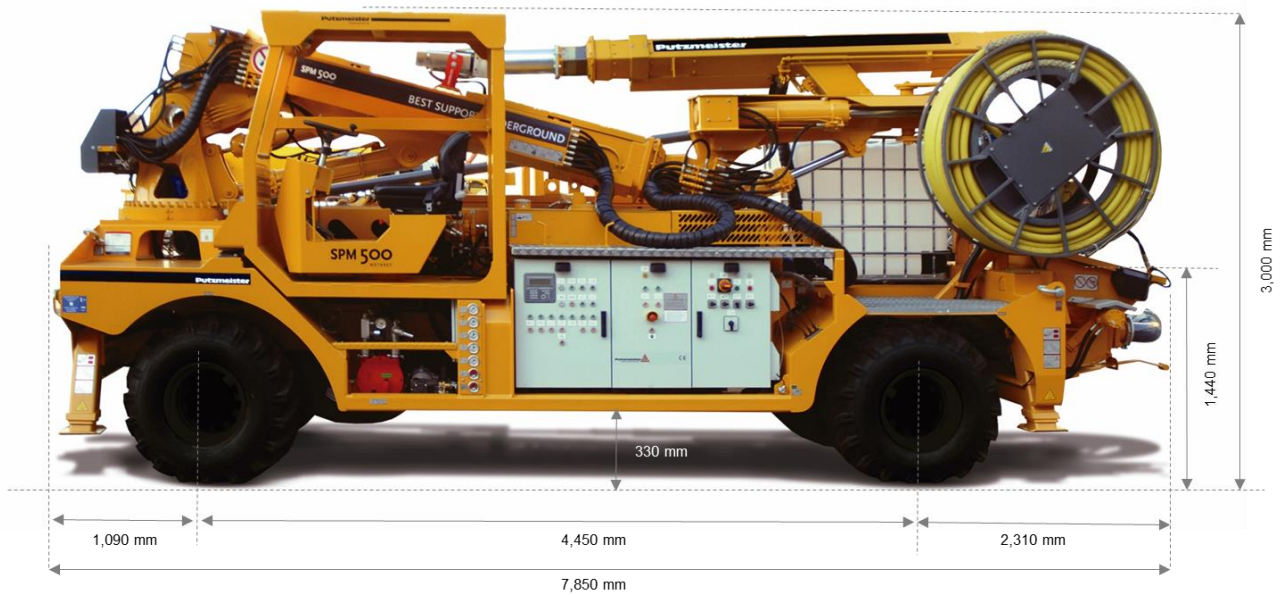
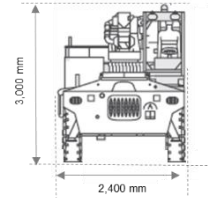


## Concrete spraying equipment

## SPM 500 Wetkret

17 m vertical spraying reach  
Concrete Flow: 30 m<sup>3</sup>/h



Note: This is a merely informative, non-binding document. Maximum theoretical values listed. Specifications are subject to change without prior notice. Photos and drawings are for illustrative purposes only. For available options, please consult the factory.

### Standard equipment

Telescopic praying arm Putzmeister SA 17.2		
Max. spraying reach (vertical/horizontal)	m	17 / 15
Number of arm extensions		2 telescopic
Telescopic stroke	m	2 x 2.000
Number of axles		9
Max. arm angle	°	+60 -23
Working lights (x2 LED)	V / W	24 / 80

Spraying head		
Rotation	°	360
Inclination	°	+/- 120
Nutation	°	8
Nozzle	DN	40 / 50

Remote control		
Dual radio / cable	m	15
Drive		Electric

Putzmeister concrete pump PM1810		
Type		Double piston
Drive		Hydraulic
Max. Flow (theor.)	m <sup>3</sup> /h	30
Max. pressure on concrete (theor.)	bar	75
Transport cylinder diameter	mm	180
Max. aggregate size	mm	16
Lubrication system		Automatic

Hopper		
Full hopper capacity	l	350
Filling height	mm	1,440
Spotlight	V / W	24 / 70

Diesel engine		
Power	kW (HP)	70 (100)
Standards		EU-Stage IIIA

Pumping and spraying drive system		
Electric	kW	55

Synchronized additive system with concrete pumping		
Adjustment range	l/h	30 - 700
Max. working pressure	bar	10.5
Control system		PLC
Additive tank	l	1,000

Putzmeister off-road vehicle		
Weight (without/with load)	kg	15,500 / 16,000
Turning radius (inner/outer)	mm	2,628 / 6,370
Maximum climbing capacity at full load (longitudinal/ trasversal)	%	35 / 10
Transmission		Hydrostatic
Gearbox		2 speed
Maximum speed	km/h	20
Driving		4 WD
Steering		Hydraulic four-wheel

		steering (4WS), crab-mode
Service breaks		Hydraulic and multi-disc in oil bath for four-wheels
Parking break (negative)		Hydraulic in oil bath for four-wheels
Emergency brake		
Driving lights (x4 LED)	V / W	24 / 35
Electric equipment (x2 batteries)	V / Ah	12 / 100
Oil tank	l	390
Diesel tank	l	150
Cabin		FOPS/ROPS, 180°
Cabin's spotlight (x2 halogen)	V / W	24 / 70

Mining wheels		18" - 19,5"
<b>Cable reel</b>		
Drive		Manual
Cable lenght	m	50
Voltages	V / Hz	400 at 50 / 440 at 60

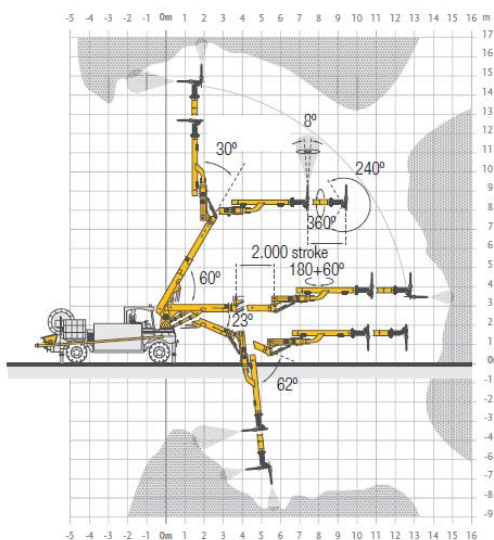
<b>High-pressure water pump for cleaning</b>		
Max. pressure	bar	200
Flow	l/min	15
Hose	m	15
Water tank	l	200

## Optional equipment

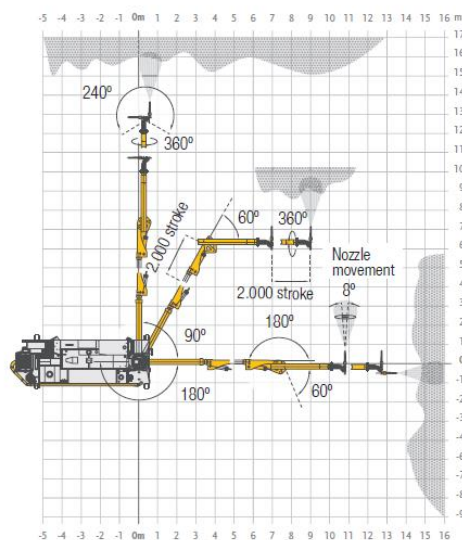
<b>Electric compressor (two options)</b>		<b>400 V a</b>	<b>440 V a</b>
		<b>50 Hz</b>	<b>60 Hz</b>
Power	kW	75	86
Air flow	m <sup>3</sup> /min	11	13
Pressure	bar	7,5	7,5
<b>Wheels</b>			
Alternative mining wheels	Michelin XMine D2 10.00 R15		
Spare wheel	Depends on configuration		
<b>Fire suppression system</b>			
DAFO	Mix		
<b>Protections</b>			
Rubber collar protection for rear axle			
Rubber collar protection for hopper			
Heat protection for additive tank			

Protection for upper carriage		
<b>Cable reel</b>		
Additional cable	m	50 (100 in total)
<b>Additional lighting</b>		
LED beacon instead halogen		
Tramming direction lights ( <i>Special configurations on demand</i> )		
<b>Others</b>		
Rear camera with night vision		
Inox water tank		
Radio remote control (2.4 GHz)		
Particle filter		
Silencer kit with catalyst		
Bio hidraulic oil with high efficiency filtration system		

## Spraying arm reach diagrams and spraying area



Vertical spraying reach



Horizontal spraying reach

