



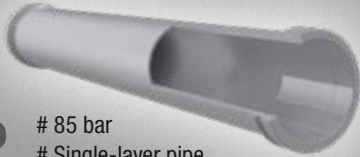
Putzmeister

PROLINE by Putzmeister

Stands for the highest quality in pressure, stability and wear resistance for attractive conditions with short delivery times.

PROLINE

1000



- # 85 bar
- # Single-layer pipe
- # ST52
- # Good value
- # For light and normally abrasive media

PROLINE

2000



- # 85 bar
- # Double-layer pipe
- # Inner pipe hardened up to 63 HRC
- # Stable
- # For Wear-intensive media

PROLINE

3000



- # 85 bar
- # Double-layer pipe
- # Inner pipe hardened up to 67 HRC
- # Maximum durability
- # For Heavily wear-intensive media



PROLINE – Pipeline by Putzmeister

TOP QUALITY

MAXIMUM AVAILABILITY

HIGH EFFICIENCY

BOOM PIPELINE

Flexible, rotatable and stable

Three quality levels are available, which offer optimum machine availability and operating costs for every level of investment.

HOPPER AND DECK PIPELINE

Stable, pressure and wear-resistant



PROLINE	1000	2000	3000
Material:	Single-layer ST52	Double-layer up to 63 HRC	Double-layer up to 67 HRC
Coupling:	SK 100 / 4.5" and SK 125 / 5.5"	SK 100 / 4.5" and SK 125 / 5.5"	SK 117 / 5.5" and SK 125 / 5.5"
Deck wall thickness:	3.6 mm or 4.0 mm	2.0 + 2.0 mm or 2.5 + 2.0 mm	2.0 + 1.5 mm or 3.0 + 1.5 mm
Length:	80–6000 mm	80–6000 mm	80–6000 mm
Material:	Single-layer ST52	Double-layer up to 63 HRC	Double-layer up to 67 HRC
Coupling:	SK 125 / 5.5"	SK 125 / 5.5"	SK 125 / 5.5"
Deck wall thickness:	7.0–12.0 mm	7.0 + 4.0 mm	7.0 + 2.0 mm
Angle:	5–90°	5–90°	5–90°

PROLINE	1000	2000	3000
Material:	Single-layer ST52	Double-layer up to 63 HRC	Double-layer up to 67 HRC
Coupling:	SK 125 / 5.5"	SK 125 / 5.5"	SK 125 / 5.5"
Deck wall thickness:	7.1 mm	5.6 + 3.0 mm	5.6 + 3.0 mm
Length:	80–6000 mm	80–6000 mm	80–6000 mm
Material:	Single-layer ST52	Double-layer up to 63 HRC	Double-layer up to 67 HRC
Coupling:	SK 125 / 5.5"	SK 125 / 5.5"	SK 125 / 5.5"
Deck wall thickness:	7.0–12.0 mm	7.0 + 4.0 mm	7.0 + 2.0 mm
Angle:	5–90°	5–90°	5–90°

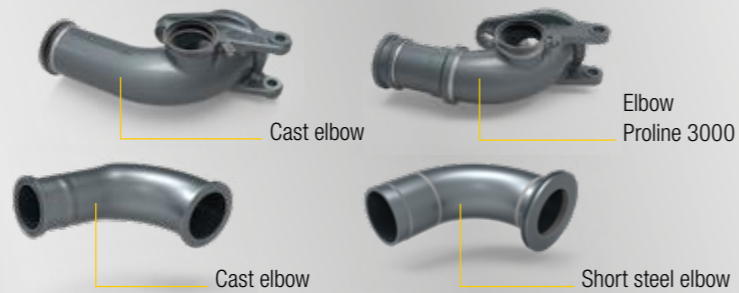
COUPLING SYSTEM



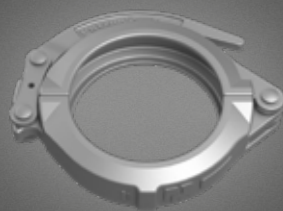
SK coupling system
Flexible and fast laying
Pressure-resistant up to 85 bar

ZX coupling system
Leak-tight and stable
Pressure-resistant up to 250 bar

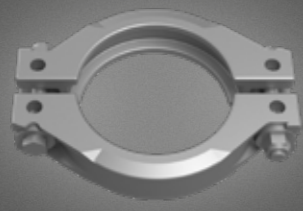
HINGED ELBOW – various types available



COUPLING TYPES



SK-H lever coupling
for simple laying and opening



ZX-S and SK-S threaded coupling
for fixed or temporarily fixed laying



ZX-K and SK-K eye-bolt coupling
for fast laying



ZX-W wedge coupling
for rapid opening

NUMEROUS SPECIAL COMPONENTS AVAILABLE FOR THE MOST CRITICAL AREAS:

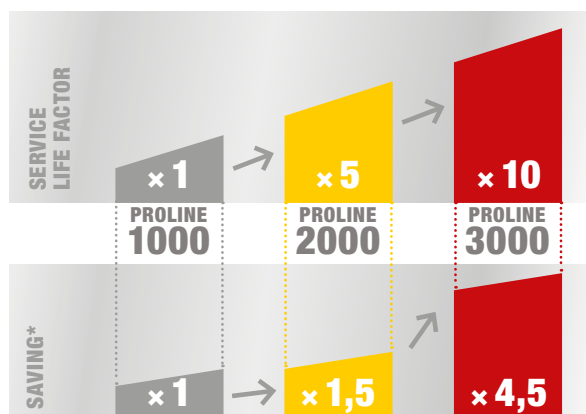
- Reduction with special two-layer design
- Tower elbow, optimized design in Proline 3000
- Pipe bend on the swivel joints with extension
- Conveyor pipe with reinforced inlet flange especially after pipe bends
- Impact elbow with extra thick, impact-resistant cast insert



BENEFITS FOR YOU AT A GLANCE

- Quality**
 Tested, precisely fitting, durable without interference due to material, weight or production fluctuations
- Availability**
 Our forward-looking inventory management also enables special components to be optimally stocked and delivered at short notice
- Efficiency**
 We offer an optimal price-performance ratio in all three requirement classes

PROLINE EFFICIENCY COMPARISON



* Measured against the total costs over the service life of Proline 3000

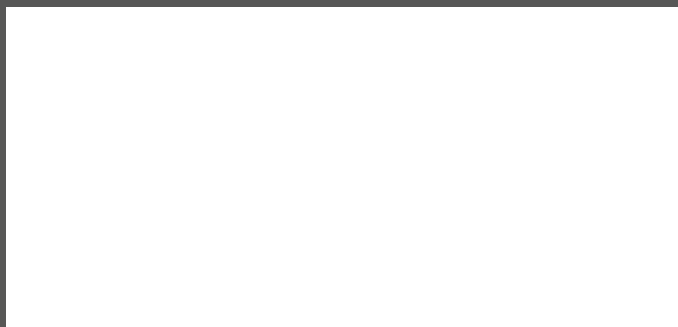


The complete conveyor line is delivered in high-quality packaging and ready for installation



Extensive accessories are available for trouble-free operation of your conveyor line

Distributed by:



 **Putzmeister**

Putzmeister Concrete Pumps GmbH

Max-Eyth-Straße 10 · 72631 Aichtal / Germany

P.O.Box 2152 · 72629 Aichtal / Germany

Tel. +49 (7127) 599-0 · Fax +49 (7127) 599-520

pmw@putzmeister.com · www.putzmeister.com