



Putzmeister



Used machines in premium quality
from the manufacturer

Putzmeister Used Machine Park in Gründau near Frankfurt / Germany – the place for used concrete pumps in Europe

Buying a used machine is a matter of trust – rely on the specialists

It is much more difficult for a buyer to evaluate a used machine than a new one. Why? Because besides technical expertise, a detailed knowledge of design, components and control systems is also necessary, at a level that is unique to the manufacturer himself.

Therefore, used PM machines can only be thoroughly checked and repaired by Putzmeister themselves. This means that customers know what they are getting for their money. They can rely on the used machine just as if it were a new one.

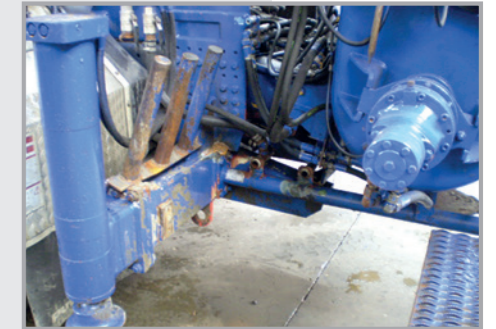


There are many good reasons for buying a used Putzmeister machine

- The vehicle (MB, MAN or other) is tested at a specialist workshop and, where necessary, is overhauled, and has technical inspection certificates (TÜV, AU, etc. where required).
- The concrete pump structure is inspected, including the inside and/or non-visible areas, where possible. This is the basis for the subsequent repair
- Wear parts with more than 50% wear are replaced (delivery line, spectacle plate, etc.)



For example:
A PUMI 24.87 S comes to the Putzmeister factory for check and restore the condition ready-to-work



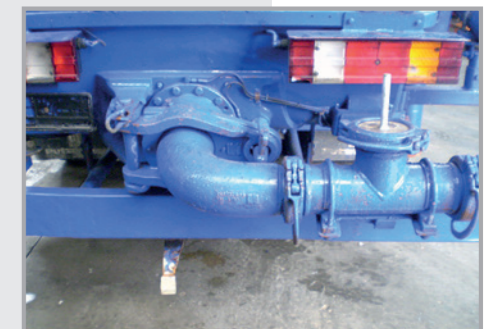
The hopper and agitator are cleaned, the agitator motor is sealed



Necessary welding is performed by certified welders.



Delivery pistons and filters are replaced, the drive cylinders are resealed.



After readjustment, inspection and retrofitting to the ready-to-work condition the PUMI can be delivered.

- Operating materials are tested (hydraulic fluid check) and changed depending on their condition
- Delivery pistons are generally replaced, drive cylinders sealed, radio equipment is tested, etc.
- Refits are carried out and updates to technically compatible software are performed
- Standard accessories are checked and supplemented
- Final acceptance is similar to that of a new machine (manufacturer inspection)

Used machines from the manufacturer represent value for money

Find out for yourself whether a reconditioned machine from our factory is right for you:

Andreas Wehner Phone +49 7127 599-1805 **WehnerA@pmw.de**
Mijo Marcec Phone +49 7127 599-910 **MarcecM@pmw.de**

www.putzmeister.de

Putzmeister Concrete Pumps GmbH **Used machine parc / Branch Frankfurt**

Industriestraße 10 · 63584 Gründau-Rothenbergen / Germany
Phone +49 6051 4805 800 · Fax +49 6051 4805 850
www.putzmeister.de



Putzmeister Concrete Pumps GmbH
Max-Eyth-Straße 10 · 72631 Aichtal / Germany
P.O.Box 2152 · 72629 Aichtal / Germany
Phone +49 7127 599-0 · Fax +49 7127 599-520
pmw@pmw.de · www.putzmeister.com

 **Putzmeister**