




**Putzmeister**

# **PROLINE** by Putzmeister


Stands for the highest quality in pressure, stability and wear resistance for attractive conditions with short delivery times.

**PROLINE  
1000**



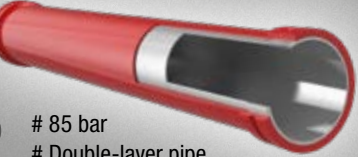
- # 85 bar
- # Single-layer pipe
- # ST52
- # Good value
- # For light and normally abrasive media

**PROLINE  
2000**



- # 85 bar
- # Double-layer pipe
- # Inner pipe hardened up to 63 HRC
- # Stable
- # For Wear-intensive media

**PROLINE  
3000**



- # 85 bar
- # Double-layer pipe
- # Inner pipe hardened up to 67 HRC
- # Maximum durability
- # For Heavily wear-intensive media



## PROLINE – Pipeline by Putzmeister

# TOP QUALITY

# MAXIMUM AVAILABILITY

# HIGH EFFICIENCY

## BOOM PIPELINE

Flexible, rotatable and stable

Three quality levels are available, which offer optimum machine availability and operating costs for every level of investment.

## HOPPER AND DECK PIPELINE

Stable, pressure and wear-resistant



PROLINE	1000	2000	3000
<b>Material:</b>	Single-layer ST52	Double-layer up to 63 HRC	Double-layer up to 67 HRC
<b>Coupling:</b>	SK 100 / 4.5" and SK 125 / 5.5"	SK 100 / 4.5" and SK 125 / 5.5"	SK 117 / 5.5" and SK 125 / 5.5"
<b>Deck wall thickness:</b>	3.6 mm or 4.0 mm	2.0 + 2.0 mm or 2.5 + 2.0 mm	2.0 + 1.5 mm or 3.0 + 1.5 mm
<b>Length:</b>	80–6000 mm	80–6000 mm	80–6000 mm
<b>Material:</b>	Single-layer ST52	Double-layer up to 63 HRC	Double-layer up to 67 HRC
<b>Coupling:</b>	SK 125 / 5.5"	SK 125 / 5.5"	SK 125 / 5.5"
<b>Deck wall thickness:</b>	7.0–12.0 mm	7.0 + 4.0 mm	7.0 + 2.0 mm
<b>Angle:</b>	5–90°	5–90°	5–90°

PROLINE	1000	2000	3000
<b>Material:</b>	Single-layer ST52	Double-layer up to 63 HRC	Double-layer up to 67 HRC
<b>Coupling:</b>	SK 125 / 5.5"	SK 125 / 5.5"	SK 125 / 5.5"
<b>Deck wall thickness:</b>	7.1 mm	5.6 + 3.0 mm	5.6 + 3.0 mm
<b>Length:</b>	80–6000 mm	80–6000 mm	80–6000 mm
<b>Material:</b>	Single-layer ST52	Double-layer up to 63 HRC	Double-layer up to 67 HRC
<b>Coupling:</b>	SK 125 / 5.5"	SK 125 / 5.5"	SK 125 / 5.5"
<b>Deck wall thickness:</b>	7.0–12.0 mm	7.0 + 4.0 mm	7.0 + 2.0 mm
<b>Angle:</b>	5–90°	5–90°	5–90°

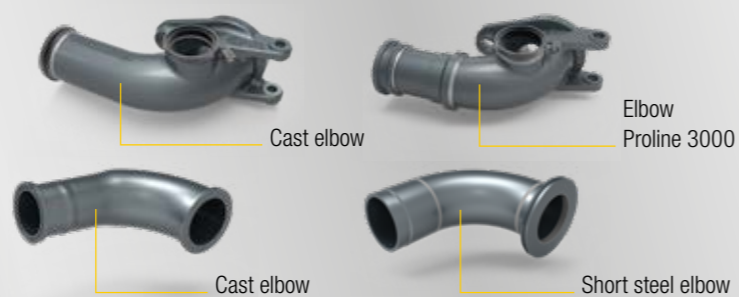
### COUPLING SYSTEM



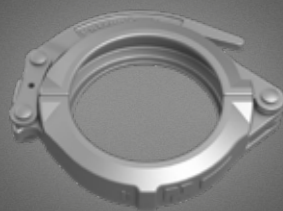
**SK coupling system**  
# Flexible and fast laying  
# Pressure-resistant up to 85 bar

**ZX coupling system**  
# Leak-tight and stable  
# Pressure-resistant up to 250 bar

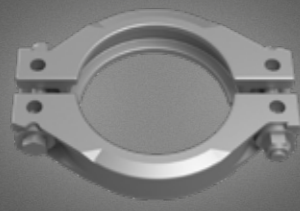
### HINGED ELBOW – various types available



### COUPLING TYPES



**SK-H lever coupling**  
for simple laying and opening



**ZX-S and SK-S threaded coupling**  
for fixed or temporarily fixed laying



**ZX-K and SK-K eye-bolt coupling**  
for fast laying



**ZX-W wedge coupling**  
for rapid opening

### NUMEROUS SPECIAL COMPONENTS AVAILABLE FOR THE MOST CRITICAL AREAS:

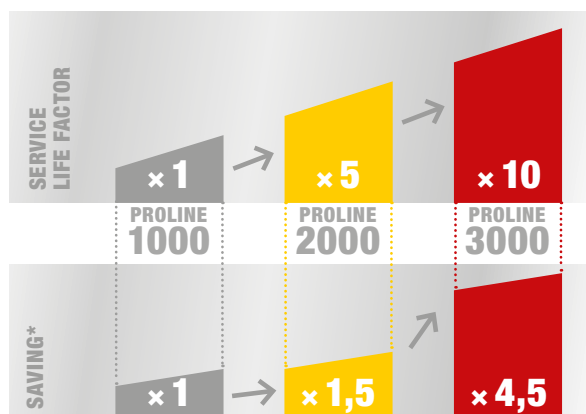
- Reduction with special two-layer design
- Tower elbow, optimized design in Proline 3000
- Pipe bend on the swivel joints with extension
- Conveyor pipe with reinforced inlet flange especially after pipe bends
- Impact elbow with extra thick, impact-resistant cast insert



## BENEFITS FOR YOU AT A GLANCE

- Quality**  
 Tested, precisely fitting, durable without interference due to material, weight or production fluctuations
- Availability**  
 Our forward-looking inventory management also enables special components to be optimally stocked and delivered at short notice
- Efficiency**  
 We offer an optimal price-performance ratio in all three requirement classes

## PROLINE EFFICIENCY COMPARISON



\* Measured against the total costs over the service life of Proline 3000

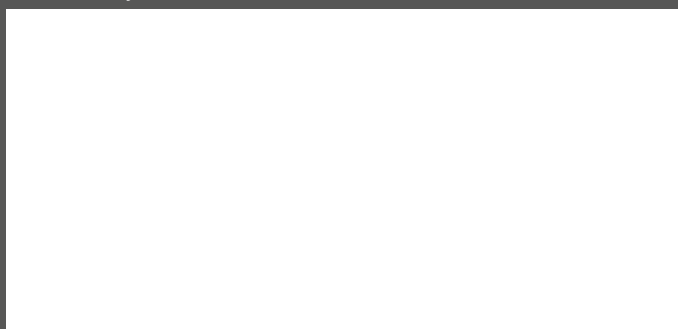


The complete conveyor line is delivered in high-quality packaging and ready for installation



Extensive accessories are available for trouble-free operation of your conveyor line

Distributed by:



**Putzmeister Concrete Pumps GmbH**

Max-Eyth-Straße 10 · 72631 Aichtal / Germany

P.O.Box 2152 · 72629 Aichtal / Germany

Tel. +49 (7127) 599-0 · Fax +49 (7127) 599-520

pmw@putzmeister.com · www.putzmeister.com